

LEON



CUPRA

Sportstourer MY26.5



INDEX

	INTRODUCTION WE ARE CUPRA; THE THREAD	→	03
05 ←	DESIGN EXTERIOR & INTERIOR DESIGN; EXTREME PACKAGE		
	POWER DRIVETRAINS	→	10
12 ←	INNOVATION TECHNOLOGY & SAFETY		
	SUPPORT WARRANTY & PEACE OF MIND	→	16
18 ←	MODELS KEY FEATURES, ALLOY WHEELS, COLOURS & UPHOLSTERIES		
	TECHNICAL TECHNICAL DETAILS, FULL FEATURES, OPTION PACKAGES & NOTES	→	24



INSPIRING THE WORLD FROM BARCELONA

CUPRA (short for CUP RACING) emerged in the 1980's through the motorsport division of Spanish brand SEAT, which competed successfully in World Rally and World Touring Car Championships. The CUPRA nameplate first began appearing in 1996 on selected performance models before growing in popularity such that in 2018 CUPRA became a stand-alone brand with dedicated variants of the Leon and Ateca, and ongoing success in a variety of motorsport categories. Soon thereafter, CUPRA-unique models were launched including the Formentor, Born, Tavasca, Terramar and soon the Raval, with worldwide sales surpassing one million vehicles in 2025.

As a proud member of the Volkswagen family alongside brands such as Porsche, Lamborghini, Audi and Skoda; CUPRA fuses the latest German engineering with edgy Spanish design and engaging dynamics to create vehicles that deliver an irrepressible impulse while driving, and a yearning to look back as you walk away.

In Australia, CUPRA launched in 2022 with unique Sales and Service 'Garages' in key hubs around the country. In a short space of time our Tribe has grown to over 10,000 obsessive enthusiasts who value the journey as much as the destination, and for whom blending-in just isn't in their DNA.

If this resonates with you, maybe you have a little bit of Spanish in you.

Maybe you're One Of Us.

Find out more www.cupraofficial.com.au/our-dna/garage/about-us.





THE THREAD

An unbreakable thread ties you to your destiny.

This thread turns your ideas into a pulse of intense emotions, driving you towards the finish line - a journey bound by passion.

It is here that the soul is ignited at every turn.

This isn't just a desire; It's the magnetic field of your wildest vision. An attraction so strong that you can't help but embrace it.

This is the power of attraction, the driving force behind any successful journey.

[BOOK A TEST DRIVE](#)

[EXPLORE LEON](#)

[SEARCH AVAILABLE STOCK](#)

[LOCATE A CUPRA GARAGE](#)





DESIGN

Attraction is the catalyst for beauty, and the prelude to admiration. Just like a symphony that captures all of your senses, leaving nothing but you and the resounding harmony. In it lies this craft: each detail, each sensation, everything is a testament to beauty in motion. For us, this is about you, the driver.

Although your emotions can sometimes distract you, we strive to transform them into a driving force that keeps moving you forward.



EXTERIOR DESIGN



REVOLUTION UP FRONT

Explore a crafted front-end with its sharks-nose bumper, aggressive grille, signature triangle daytime running lights and an integrated logo for a sleek, powerful statement.



INFINITE LIGHT

Stand out with our iconic 3D infinite rear LED lights. The central illuminated CUPRA logo adds a sophisticated touch to the multi-layer brake lights, making your presence undeniable. The Leon name shines intently in the side lights, rewarding those who search out intricate details.





INTERIOR DESIGN



FOCUSED INTERIOR

Our CUPRA Leon interior has always been driver-orientated, with ergonomics that ensure key controls are close at hand and intuitive to operate.

With recent updates to the Leon family, this focus has been sharpened with a refreshed user interface, updated graphics, larger infotainment screen and redesigned elements including the lower centre console. Immerse yourself in a cabin crafted for a real driving experience, simultaneously abounding in every-day creature comforts.



GET COMFY

Our racy bucket front seats are clad with supple Moonstone Leather appointments, plus memory recall of the 12-way adjustable power front seats, so your perfect position is only ever a button touch away.

Front seats are heated and embossed with the CUPRA logo in the integrated headrest, because it's the small details that elevate your experience.





PUSH MY BUTTONS

Engine-starting and drive profile selection are at your fingertips, along with paddle shifters and controls to manipulate several different display options for the digital cockpit instrumentation.



TIME FOR A GLOW UP

Select from multiple lighting themes to elevate the interior vibe. From Pulse to Boreal and more, ambient lighting glows from the front doors and across the dash, brightening up your night.





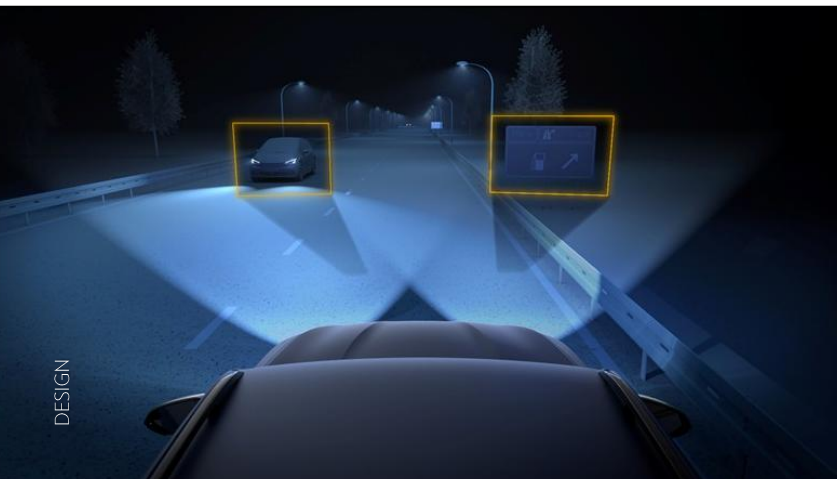
GO EXTREME

Option-up into the Extreme Package to experience the most race-honed level of Leon specification available.

→
Brembo performance front brakes
with copper 4-piston front calipers and
larger cross-drilled rotors.



←
Sabelt CUP Bucket front seats
with Enceladus Grey Seaqual & Dinamica appointed
trim, carbon fibre back and dark chrome accents.



←
Matrix Ultra LED headlights
cascade high-beam light to maintain vision
without glaring oncoming drivers.



POWER

They say there's a virtuous circle where a strong drive leads to a powerful destiny. But what is it about this powerful drive that seems so inviting? It's like the magnetic pull of masterful engineering - a force so captivating, one must not leave.

Within lies the essence of driving: a desire to command the road with an energy so electrifying that there is no other choice but to start the engine and press the accelerator.



LEON VZe SPORTSTOURER WITH GEN2 PLUG-IN HYBRID

The CUPRA Leon VZe Sportstourer is one of the first Australian CUPRA's to be fitted with our latest generation plug-in hybrid (PHEV) technology with significant performance and capability improvements.

The 1.5L turbo petrol engine is paired with an electric motor and a hybrid battery to provide traditional hybrid benefits – additional electric power to get you moving faster and with far less fuel use.

Then go further; the plug-in technology allows you to charge the battery at home or on-the-go to provide over 100km⁶ of electric driving range - perfect for your daily commute - before switching back to traditional hybrid operation for longer trips, ideal for Australian conditions.

It's a rare moment indeed when emotion and logic are this synchronised.





INNOVATION

Innovation is challenging the status quo with cutting-edge technology and design. For us this is a declaration of independence from the ordinary, embracing change as the path to excellence.

Leon is a testament to those who dare to be different, merging advanced technology with thrilling performance.

Claim your place in the driver's seat and steer towards a future where every drive is an extraordinary experience.





TECHNOLOGY



CRITICAL DELIVERY

Customise how you receive crucial information with the CUPRA Leon digital cockpit.

Select your preferred display of key information from several single, dual or no-dial layouts spread across the 10.25" screen, then choose the information to show in the left and right widgets.



LET'S GO PARKING

Park like a pro every time with the CUPRA Leon park-assist self-parking system¹¹.

12 sensors spread strategically around the vehicle help you identify a suitable parking spot, then let the system take control of the steering to guide you smoothly into place, aided by a reversing camera with dynamic guidelines.

Prototype model shown for illustrative purposes only



MULTIMEDIA



NEW GENERATION INFOTAINMENT

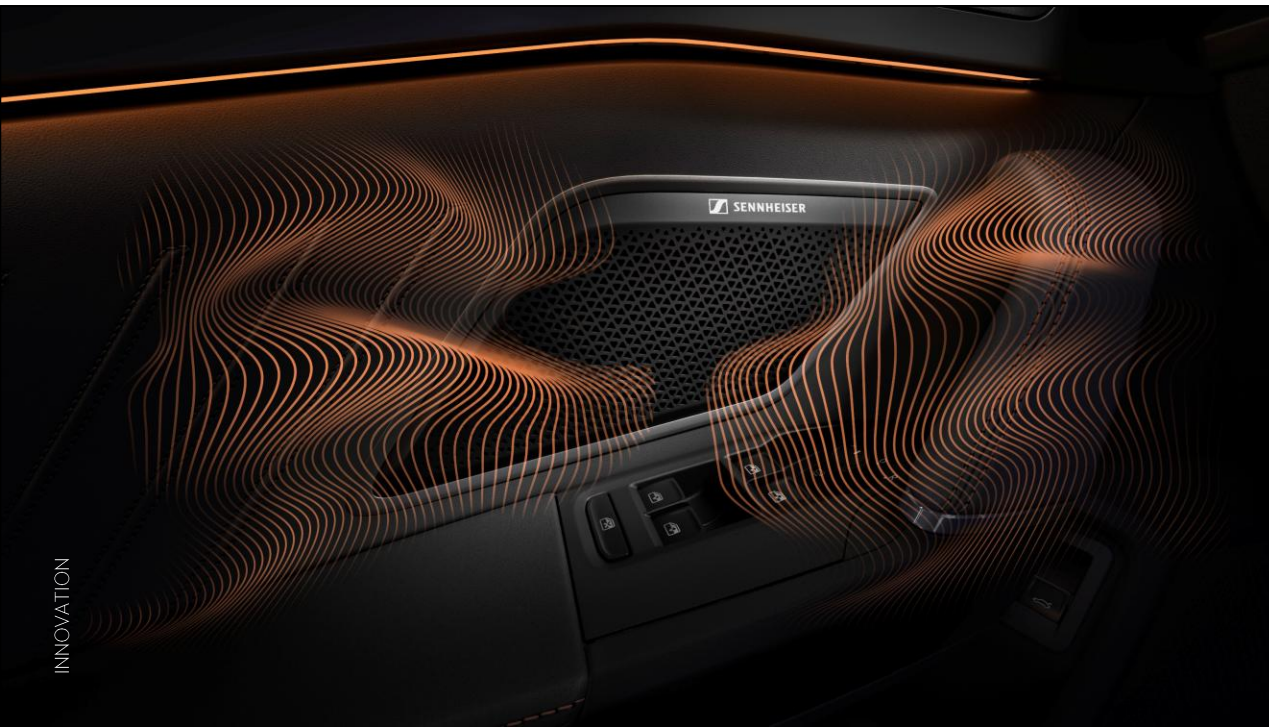
The CUPRA Leon features our latest generation entertainment system, spread across a large 12.9" touchscreen with separate illuminated controls for temperature and volume.

The crisp, high-definition screen is your portal to functions like navigation, 3-zone climate control, drive profiles, ambient lighting and vehicle settings, and compliments the 10.25" customisable digital cockpit instrumentation.



SENNHEISER PREMIUM AUDIO

The Leon Sportstourer steps up to announce our partnership with renown audio experts Sennheiser, equipped with 12 speakers (including a boot-mounted subwoofer), 390-watt amplifier and Sennheiser-crafted immersion software to faithfully re-create your favourite soundscape and transform Leon's interior into anything from a pumping club to an exquisite concert hall.





SAFETY



FULL SUITE

CUPRA is fully committed to your wellbeing, that's why the suite of safety and driver-assist systems¹¹ in the New CUPRA Leon is as long as your arm, plus someone else's arm too.

A small sample of these include front assist collision warning and braking, speed sign recognition, lane safety, blind spot monitoring and ten airbags.¹¹



INCREDIBLY CRUISE

The CUPRA Leon features an advanced cruise control system which can follow the car in front while making minor speed corrections¹¹, plus engage travel assist to aid you in holding to the centre of the lane¹¹.



SUPPORT

Our services are crafted for your peace of mind.

Overseas Sportstourer model shown



COMPREHENSIVE ASSURANCE



5-YEAR WARRANTY

We have every confidence in our CUPRA vehicles, and we want to share that confidence with you. That's why every CUPRA comes with a factory-backed 5-year unlimited kilometre warranty*.



5-YEAR ROADSIDE ASSISTANCE

Every new CUPRA vehicle comes with five years of CUPRA Roadside Assistance including 24-hour roadside support, emergency accommodation, car rental and towing*. We'll help you get back on the road again – at any time of day.

Overseas models shown with optional Sunroof and Extreme Package in Enceladus Grey Matte.
*[Warranty](#) and [Roadside](#) conditions and exclusions apply. Your rights under this warranty are provided in addition to, and in some cases overlap with, consumer guarantees under Australian Consumer Law and do not limit or replace them. See website for full details.



MODELS

Your guide to the available engines, key equipment and colours.

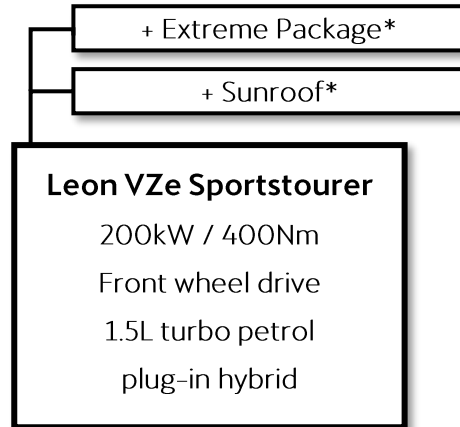


Overseas VZe Sportstourer model shown with optional sunroof



VARIANTS

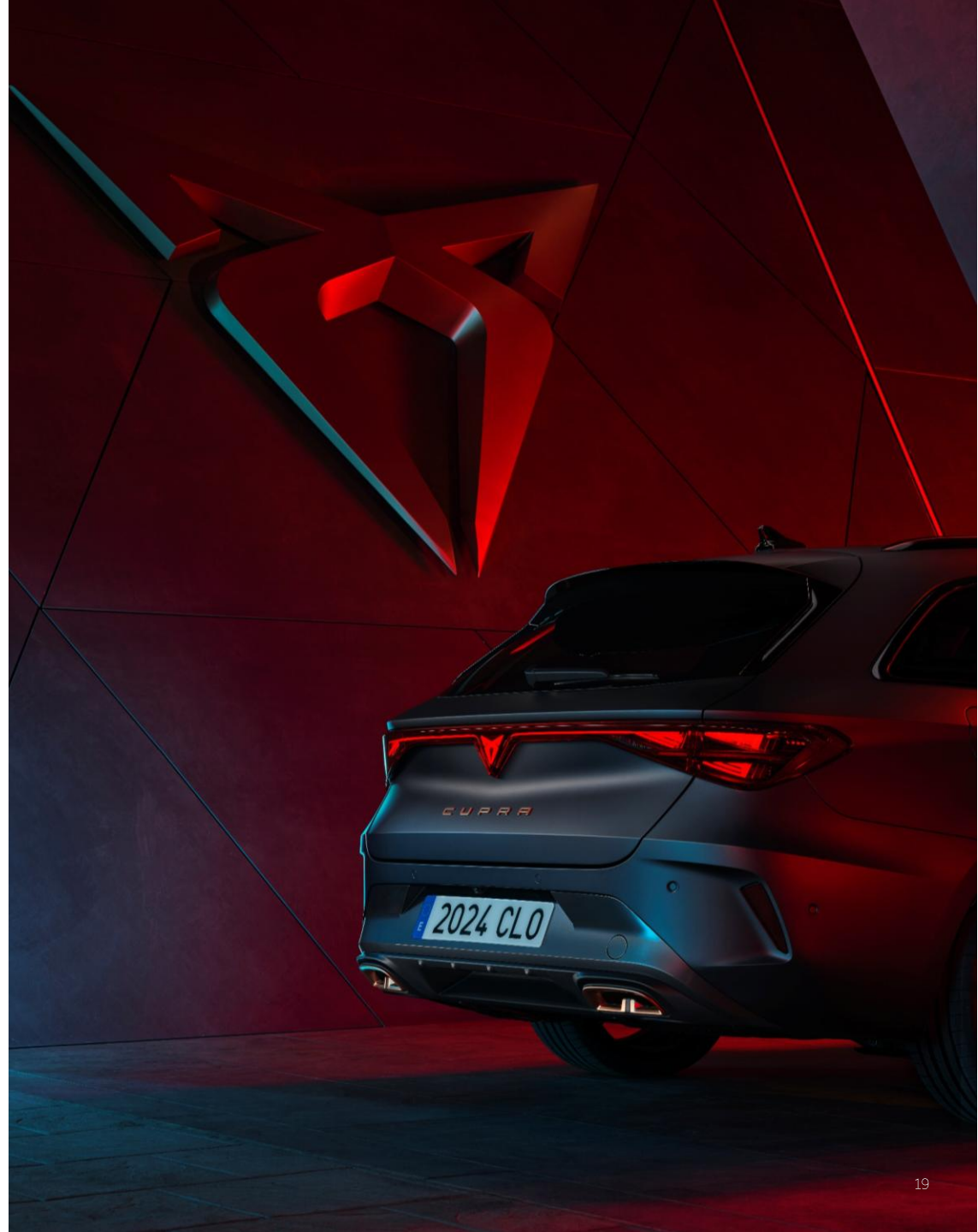
We start where others finish, including bespoke drivetrains and a curated selection of options for your consideration.



KEY FEATURES & ALLOY WHEELS

EXTERIOR COLOURS

UPHOLSTERIES





LEON VZe SPORTSTOURER →

KEY STANDARD FEATURES

- 1.5L turbo petrol engine with Gen2 plug-in hybrid drivetrain
- 200kW / 400Nm / 7.3sec 0-100kmh³ / 1.5L/100km⁵ / 119km electric-only range⁶
- Front wheel drive with 6-speed DSG with paddle shift
- 19" 'Polar' black & copper alloys (pictured)
- DCC adaptive suspension
- LED headlights with diamond DRL's
- LED 'coast-to-coast' taillights including CUPRA logo
- Power tailgate with kick sensor
- Black roof rails
- Mode 2 & 3 charging cables
- Smart entry & push-button start with drive profile selection
- Sports bucket front seats with Moonstone dark grey leather appointed seat trim⁷
- Front power seats with memory & heating
- Supersport heated steering wheel
- 12-speaker Sennheiser premium sound system
- 3-zone climate control
- 10.25" digital cockpit instrumentation and 12.9" touchscreen infotainment with navigation
- Apple CarPlay® & Android Auto™ (wireless)⁹ with wireless phone charger
- Ambient interior lighting and auto-dimming interior mirror
- Driver assist suite including active cruise & travel assist¹¹
- Speed sign recognition¹¹
- Rear camera with dynamic guidelines plus front & rear parking sensors & park assist self-parking¹¹
- 10 airbags including rear side & front centre

OPTIONS

- Optional premium or matte paint
- Optional panoramic sunroof
- Optional Extreme Package – Matrix Ultra cascading high beams, Enceladus Grey Seaqual & Dinamica appointed seat trim, Sabelt CUP Bucket front seats with carbon fibre backs (less seat-back pockets & front centre airbag), Copper 4-piston Brembo front calipers & larger cross drilled front rotors, rear spoiler extension, side skirts, dark gloss grey interior accents (in place of copper)





COLOURS

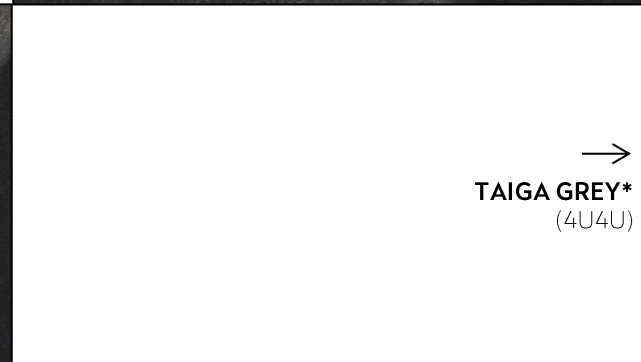
Continued next page.



←
MAGNETIC TECH
(S7S7)



→
GLACIAL WHITE
(2Y2Y)



→
TAIGA GREY*
(4U4U)



←
FIORD BLUE
(9K9K)



←
MIDNIGHT BLACK
(OEOE)

The reproduction process does not allow for exact reproduction of the exterior or the upholstery colours. Please contact your CUPRA Agent for further information on colours and upholstery combinations.

*Optional Premium Paint available at additional cost

**Optional Matte Paint available at additional cost



COLOURS

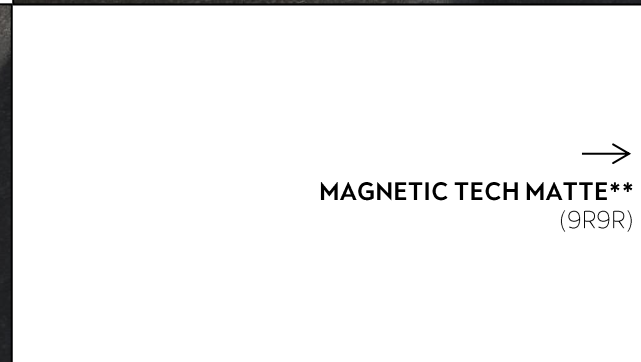
Continued previous page.



←
CENTURY BRONZE MATTE**
(L3L3)



→
GRAPHENE GREY*
(R6R6)



→
MAGNETIC TECH MATTE**
(9R9R)



←
ENCELADUS GREY MATTE**
(Q7Q7)



←
DARK VOID*
(Q5Q5)



The reproduction process does not allow for exact reproduction of the exterior or the upholstery colours. Please contact your CUPRA Agent for further information on colours and upholstery combinations.
*Optional Premium Paint available at additional cost
**Optional Matte Paint available at additional cost



UPHOLSTERIES



LEON VZe Sportstourer with optional Extreme Package:
Enceladus Grey Seaqual & Dinamica appointed (CUP Bucket seats)



LEON VZe Sportstourer:
Moonslate leather appointed⁷

[BOOK A TEST DRIVE](#)

[EXPLORE LEON](#)

[SEARCH AVAILABLE STOCK](#)

[LOCATE A CUPRA GARAGE](#)

The reproduction process does not allow for exact reproduction of the exterior or the upholstery colours. Please contact your CUPRA Agent for further information on colours and upholstery combinations. Overseas model shown.



TECHNICAL

In the realm of CUPRA Leon, technical prowess is more than mere numbers; it's a symphony of engineering achievements.

Here, every detail sings of dedication to excellence, marrying power with sustainability, efficiency with passion, track with road. This is where state-of-the-art technology converges, creating a driving experience that connects human and machine.

Overseas model shown with optional sunroof



TECHNICAL

VZe

Engine

Engine type	4-cylinder inline petrol engine; turbocharged; intercooled
Engine size (L)	1.5
Hybrid technology	Plug-in hybrid
Max. engine power (kW)	130
Max. engine torque (Nm)	250
Fuel type (recommended)	Premium unleaded – 95 RON minimum

Hybrid electric vehicle system

Max. motor power (kW)	85
Max. motor torque (Nm)	330
Hybrid battery	20kWh Li-on
Charging – AC	Type 2 socket, 11kW max
Charging – DC	Type 2 CCS socket, 50kW max
Included charging cables	Mode 2 & 3

Total system output

Max. power (kW)	200
Max torque (Nm)	400

Drivetrain

Driven wheels	Front
Transmission	Dual-clutch Direct Shift Gearbox (DSG)
Forward gears	6
Transmission control	Shift By Wire (SBW) with paddle shift
Differential control	Extended electronic differential locking

VZe

Weights & capacities

Tare mass (kg)	1,692
GVM (kg)	2,140
Fuel tank (L)	40

Running Gear

Steering	Rack-mount electric power-assisted progressive steering
Suspension	Dynamic Chassis Control (DCC) adaptive suspension
Suspension – Front	Independent MacPherson strut
Suspension – Rear	Independent multi-link
Brakes – Front	Ventilated discs; Single piston calipers with black finish & CUPRA word mark
Brakes – Rear	Ventilated discs; Single piston calipers with black finish
Performance Brakes – Front	Optional 4-piston Brembo calipers with copper finish, Brembo word mark and larger cross-drilled discs

Performance³

0 – 80km/h (sec.)	5.5
0 – 100km/h (sec.)	7.3

Fuel / Energy consumption^{5,6}

Combined (L/100km)	1.5
Combined CO2 emission (g/km)	35
Energy consumption (Wh/km)	189
Electric range (km) (WLTP)	119

Dimensions

Overall length (mm)	4,656
Overall width (mm)	1,799
Overall height (mm)	1,466
Wheelbase (mm)	2,682
Turning circle (m)	10.8

Luggage area – Seats up (L)	470 (1,045 with rear seats down)
-----------------------------	----------------------------------



FULL FEATURES

	VZe
Wheels	
19" black & copper 'Polar' alloy wheels	S
Tyre repair kit	S
Driver engagement	
Dynamic Chassis Control (DCC) adaptive suspension	S
Drive profile selection - Comfort, Performance, Individual & CUPRA drive modes	S
Drive profile selection - Additional Electric & Hybrid drive modes	S
Engine sound-modelling - Comfort, Performance & CUPRA	S
Leather appointed multifunction steering wheel [7]	S
Heated supersport steering wheel with drive profile & engine-start satellite buttons	S
Progressive steering	S
Exterior	
Power tailgate with easy open/close kick sensor	S
Sports bumper design with integrated rear diffuser	S
Side skirts - Gloss black	P
Rear roof spoiler - Body coloured	S
Rear roof spoiler extension - Gloss black	P

	VZe
Lighting	
Full LED headlights with auto-levelling & triangle-eye daytime running lights	S
Light assist - Automatic high beam	S
Matrix Ultra cascading high beam control	P
Coast-to-coast rear LED lights with illuminated CUPRA logo	S
Front & rear welcome-lighting sequence including approach lighting	S
Front fog lights with cornering function	S
Puddle light in exterior mirrors - CUPRA logo projection	S
Touch-sensitive reading lights - x2 front, x2 rear	S
Ambient interior lighting (dash & front doors) with several colour schemes	S
Illuminated front scuff plates	S
Mirrors	
Power exterior mirrors with auto-folding, heating and memory	S
Auto-dimming interior rear-view mirror	S
Audio & media	
Sennheiser premium surround sound system with 12 speakers (including subwoofer) & 390W amplifier	S
Pre-set sound-stages & equaliser	S
Digital radio (DAB+)	S



FULL FEATURES

VZe

Interior & seating

Sunroof - Electric panoramic with front tilt & slide & sunblind	P
One-touch power windows with remote open / close	S
Manual tilt & telescopic steering wheel adjustment	S
Alloy pedals	S
Sports bucket front seats with integrated headrests & embossed CUPRA logo	S
Sabelt CUP Bucket front seats with carbon fibre backs (less seat-back pockets)	P
Leather appointed seat trim in Moonstone dark grey [7]	S
Seaqual & Dinamica appointed seat trim in Enceladus Grey with sustainable content	P
Driver's seat with 12-way power adjustment & memory positions x3	S
Front passengers seat with 12-way power adjustment & memory positions x3	S
Accents in copper – Air vents, steering wheel & lower centre console	S
Accents in gloss grey – Air vents, steering wheel & lower centre console	P
Comfort	
3-zone climate control air-conditioning	S
Rear-seat climate adjustment with digital readout	S
iClimate smart climate control functions	S
AirCare Clima dust & pollen filtering	S
Heated steering wheel	S
Heated front seats	S
Rear centre armrest with integrated cupholders	S

VZe

Technology

12.9" touchscreen infotainment system	S
Satellite navigation	S
10.25" digital cockpit with variable displays	S
USB-C ports x4	S
12V accessory socket x1 (front)	S
Smart entry & push-button start	S
Proximity locking (approach unlock / depart lock)	S
Apple CarPlay® & Android Auto™ - Wireless [9]	S
Bluetooth® phone connectivity including audio & message access [10]	S
Dual phone support [8]	S
Wireless phone charger [8]	S
Voice control for various functions (virtual assistant) including hold for Siri	S
Storage & convenience	
Cupholder x4 & bottle holder x4	S
60:40 split-fold seats with ski hatch	S
Retractable cargo cover	S
Shopping bag hooks x4 boot	S
Driver-assist systems¹¹	
Adaptive cruise control with 'follow to stop'	S
Travel assist - Lane centering	S
Front assist - Collision warning & autonomous braking	S
Front assist with pedestrian & cyclist detection	S
Front assist with turn assist & swerve support	S
Speed sign recognition & display with speed limit assist	S



FULL FEATURES

VZe

Driver-assist systems (continued)¹¹

Lane assist - Lane departure alert with corrective steering assistance	S
Side assist - Blind spot monitoring	S
Exit assist - Rear crossing traffic alert	S
Exit warning - Approaching vehicle warning when exiting	S
Rear camera with dynamic parking guidelines & sonar display	S
Park distance control - Front & rear parking sonar	S
Park assist - Self-parking system	S
Rain sensing wipers	S
Driver alert - Drowsiness / Attention monitor	S
Tyre pressure warning system	S
Electronic park brake with auto on/off & auto hold	S

Safety

10 airbags - Front, front side, rear side, driver's knee, front centre, curtain (front centre airbag not available with Extreme Package)	S
Rear seat belt monitor	S
Child seat anchors - x3 top tether points & ISOFIX for outer rear seats	S
Anti-theft alarm system including interior motion sensor & siren	S

PACKAGES

VZe

Sunroof

Sunroof - Electric panoramic with front tilt & slide & sunblind	P
---	---

Extreme Package

4-piston Brembo front calipers with copper finish, Brembo word mark and larger cross-drilled front discs	P
--	---

Sabelt CUP Bucket front seats with carbon fibre backs (less seat-back pockets & centre airbag)	P
--	---

Seaqual & Dinamica appointed seat trim in Enceladus Grey with sustainable content	P
---	---

Matrix Ultra cascading high beam control	P
--	---

Accents in gloss grey - Air vents, steering wheel & lower centre console	P
--	---

Side skirts - Gloss black	P
---------------------------	---

Rear roof spoiler extension - Gloss black	P
---	---

[BOOK A TEST DRIVE](#)

[EXPLORE LEON](#)

[SEARCH AVAILABLE STOCK](#)

[LOCATE A CUPRA GARAGE](#)



NOTES

[3] The figures stated are for the purposes of comparison amongst vehicles tested under the same testing procedures only. The actual figure may vary depending on multiple factors such as fuel quality, vehicle load, environmental and road conditions.

[5] Fuel consumption figures according to Australia Design Rule (ADR) 81/02 derived from laboratory testing. Factors including but not limited to driving style, road and traffic conditions, environmental influences, vehicle condition, and accessories fitted, will in practice in the real-world lead to figures, which generally differ, from those advertised. Advertised figures are meant for comparison amongst vehicles only.

[6] Range and energy consumption figures according to ADR 81/02 derived from WLTP testing. Factors including but not limited to driving style, road and traffic conditions, environmental influences, vehicle condition and accessories fitted, will in practice in the real-world lead to figures which generally differ from those advertised. Advertised figures are meant for comparison amongst vehicles only.

[7] Leather appointed seats have a combination of genuine and artificial leather, but are not wholly leather.

[8] Compatibility will vary by device.

[9] App-Connect featuring wireless Apple CarPlay® and wireless Android Auto™ is compatible with the latest versions of iOS and Android. Active data service required.

[10] The Bluetooth® word mark and logo is a registered trademark owned by Bluetooth SIG, Inc. Any use of such marks is under licence. Not all devices will be compatible and functionality will vary depending on the device.

[11] Safety / Driver assist technologies are designed to assist the driver but should not be used as a substitute for safe driving practices.

CUPRA is committed to a policy of continuous product development and reserves the right to make changes to specifications, colours and prices without notice. The information in this brochure can therefore be given as guidance only. While CUPRA makes every effort to ensure that specifications are accurate at the time of publication, you should always check with your authorised CUPRA Partner for the latest information. Due to limitations of the reproduction process the colours displayed in this brochure may vary slightly from the actual paint and material colour.

Volkswagen Group Australia Pty Ltd trading as CUPRA Australia: LMCT0012305(VIC), MD17907(NSW), 6161(TAS), MD29505(WA), 20000574(ACT).

The world is a better place with you in it;

[BOOK A TEST DRIVE](#)

[EXPLORE LEON](#)

[SEARCH AVAILABLE STOCK](#)

[LOCATE A CUPRA GARAGE](#)





VAMOS!

[BOOK A TEST DRIVE](#)

[EXPLORE LEON](#)

[SEARCH AVAILABLE STOCK](#)

[LOCATE A CUPRA GARAGE](#)