

LEON

CUPRA



Hatch MY26



INDEX

	INTRODUCTION THE THREAD	→	04
05 ←	DESIGN EXTERIOR & INTERIOR DESIGN; EXTREME PACKAGE		
	POWER DRIVETRAINS	→	10
13 ←	INNOVATION TECHNOLOGY & SAFETY		
	SUPPORT WARRANTY & PEACE OF MIND	→	17
19 ←	MODELS KEY FEATURES, ALLOY WHEELS, COLOURS & UPHOLSTERIES		
	TECHNICAL TECHNICAL DETAILS, FULL FEATURES, OPTION PACKAGES & NOTES	→	27



INSPIRING THE WORLD FROM BARCELONA

CUPRA (short for CUP RACING) emerged in the 1980's through the motorsport division of Spanish brand SEAT, which competed successfully in World Rally and World Touring Car Championships. The CUPRA nameplate first began appearing in 1996 on selected performance models before growing in popularity such that in 2018 CUPRA became a stand-alone brand with dedicated variants of the Leon and Ateca, and ongoing success in a variety of motorsport categories. Soon thereafter, CUPRA-unique models were launched including the Formentor, Born, Tavascan, Terramar and soon the Raval, with worldwide sales surpassing one million vehicles in 2025.

As a proud member of the Volkswagen family alongside brands such as Porsche, Lamborghini, Audi and Skoda; CUPRA fuses the latest German engineering with edgy Spanish design and engaging dynamics to create vehicles that deliver an irrepressible impulse while driving, and a yearning to look back as you walk away.

In Australia, CUPRA launched in 2022 with unique Sales and Service 'Garages' in key hubs around the country. In a short space of time our Tribe has grown to over 10,000 obsessive enthusiasts who value the journey as much as the destination, and for whom blending-in just isn't in their DNA.

If this resonates with you, maybe you have a little bit of Spanish in you.

Maybe you're One Of Us.

Find out more www.cupraofficial.com.au/our-dna/garage/about-us.





THE THREAD

An unbreakable thread ties you to your destiny.

This thread turns your ideas into a pulse of intense emotions, driving you towards the finish line - a journey bound by passion.

It is here that the soul is ignited at every turn.

This isn't just a desire; It's the magnetic field of your wildest vision. An attraction so strong that you can't help but embrace it.

This is the power of attraction, the driving force behind any successful journey.

[BOOK A TEST DRIVE](#)

[EXPLORE LEON](#)

[SEARCH AVAILABLE STOCK](#)

[LOCATE A CUPRA GARAGE](#)





DESIGN

Attraction is the catalyst for beauty, and the prelude to admiration. Just like a symphony that captures all of your senses, leaving nothing but you and the resounding harmony. In it lies this craft: each detail, each sensation, everything is a testament to beauty in motion. For us, this is about you, the driver.

Although your emotions can sometimes distract you, we strive to transform them into a driving force that keeps moving you forward.



EXTERIOR DESIGN



REVOLUTION UP FRONT

Explore a reimagined front-end with redesigned air intakes, a chiseled sharks-nose bumper, aggressive grille, signature triangle daytime running lights and an integrated logo for a sleek, powerful statement.



INFINITE LIGHT

Stand out with our iconic 3D infinite rear LED lights. The central illuminated CUPRA logo adds a sophisticated touch to the multi-layer brake lights, making your presence undeniable. The Leon name shines intently in the side lights, rewarding those who search out intricate details.





INTERIOR DESIGN



FOCUSED INTERIOR

Our CUPRA Leon interior has always been driver-orientated, with ergonomics that ensure key controls are close at hand and intuitive to operate.

With recent changes this focus has been sharpened with a refreshed user interface, updated graphics, larger infotainment screen and redesigned elements including the lower centre console. Immerse yourself in a cabin crafted for a real driving experience, simultaneously abounding in every-day creature comforts.



GET COMFY

Our racy bucket front seats have been upgraded with revised trims in either Black Dinamica with blue perforation, or supple Moonstone Leather appointments on selected models. Or why not try something a little more on the edge with the CUP Bucket front seats found in the optional Extreme Package available for the VZx?

All models feature drivers seat memory of the 12-way adjustable power seat, so your perfect position is only ever a button touch away.

Front seats are heated and embossed with the CUPRA logo in the integrated headrest, because it's the small details that elevate your experience.





PUSH MY BUTTONS

Engine-starting and drive profile selection are at your fingertips, along with paddle shifters and controls to manipulate several different display options for the digital cockpit instrumentation.



TIME FOR A GLOW UP

Select from multiple lighting themes to elevate the interior vibe. From Pulse to Boreal and more, ambient lighting glows from the front doors and across the dash, brightening up your night.





GO EXTREME

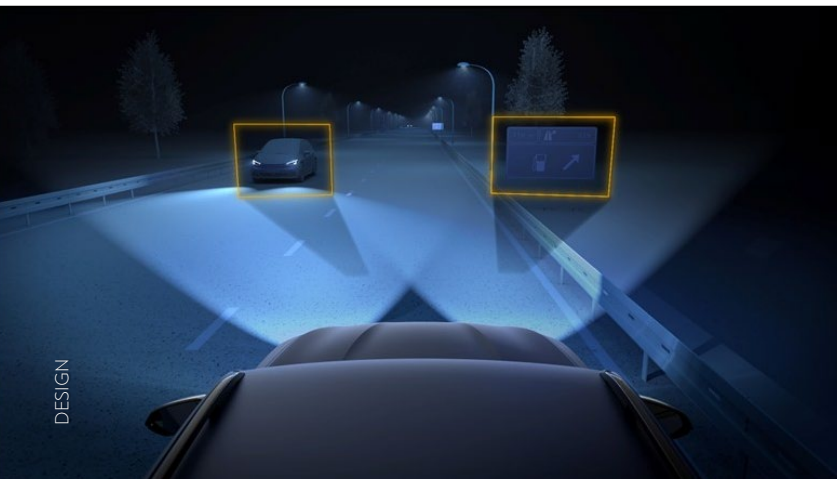
Available for our peak performer – the VZx; Option-up into the Extreme Package to experience the most race-honed level of Leon specification available.



Akebono performance front brakes
with copper 6-piston front calipers and larger rotors.



Sabelt CUP Bucket front seats
with Enceladus Grey Seaqual & Dinamica appointed trim, carbon fibre back and dark chrome accents.



Matrix LED headlights
cascade high-beam light to maintain vision without glaring oncoming drivers.



POWER

They say there's a virtuous circle where a strong drive leads to a powerful destiny. But what is it about this powerful drive that seems so inviting? It's like the magnetic pull of masterful engineering - a force so captivating, one must not leave.

Within lies the essence of driving: a desire to command the road with an energy so electrifying that there is no other choice but to start the engine and press the accelerator.



DRIVETRAINS



LEON VZx HATCH

The CUPRA Leon VZx is powered by our 2.0L turbo petrol engine family, tuned to output 221kW of power and 400Nm of torque.

The EA888 Evo4 engine is mated to a 7-speed dual-clutch direct shift automatic gearbox, and feeds power to the wheels via an electro-hydraulic differential for optimal grip.

Additional theatre is provided by a high-performance exhaust that will leave you hungry for corner exits, and several selectable drive profiles that adjust engine, steering and suspension response to suit your mood.

Numbers and technology aside, what this really means is arriving at your destination with a grin that you simply can't hide, and positive vibes that don't soon fade.

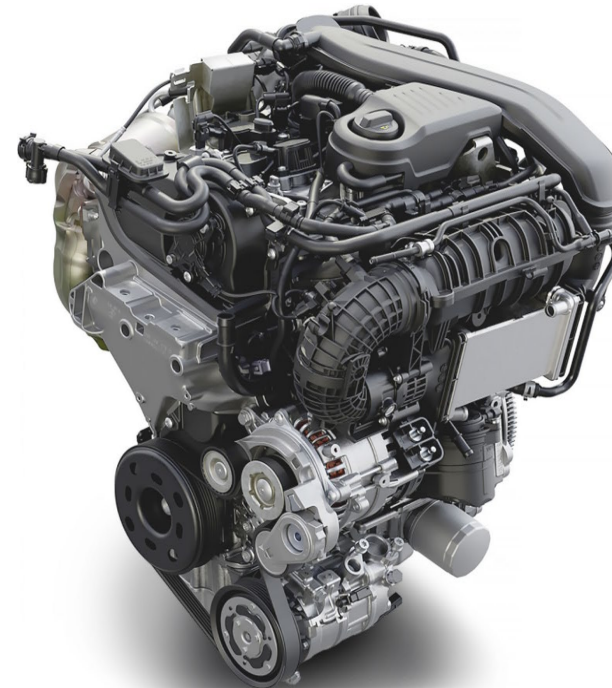


LEON S HATCH

The CUPRA Leon S Hatch is our second Australian CUPRA available with mild hybrid technology, combining a 1.5L turbo petrol engine with a 48-volt electric system to produce a combined 110kW of power and 250Nm of torque.

The mild hybrid system supports coasting with the engine off, energy regeneration when braking, and additional power during initial acceleration which improves off-the-line performance whilst simultaneously decreasing fuel consumption, especially when driving in built-up areas.

Underpinning this drivetrain is our commitment to drivers to ensure the Leon S has a fun to drive persona worthy of a CUPRA.





GAME THE SYSTEM WITH CUPRA GEN2 PLUG-IN HYBRID

The CUPRA Leon Ve is the most recent Australian CUPRA to be fitted with our latest generation plug-in hybrid (PHEV) technology with significant performance and capability improvements.

The 1.5L turbo petrol engine is mated with an electric motor and a hybrid battery to provide traditional hybrid benefits – additional electric power to get you moving faster and with far less fuel use.

Then go further; the plug-in technology allows you to charge the battery at home or on-the-go to provide over 100km⁶ of electric-only range – perfect for your daily commute – before switching back to traditional hybrid operation for longer weekend wanderings, ideal for Australian conditions.

And in true CUPRA style this drivetrain is not designed purely for frugality, but retains the emotive driver engagement that CUPRA is famed for in each facet of the steering, suspension, acceleration, braking and acoustics.





INNOVATION

Innovation is challenging the status quo with cutting-edge technology and design. For us this is a declaration of independence from the ordinary, embracing change as the path to excellence.

Leon is a testament to those who dare to be different, merging advanced technology with thrilling performance.

Claim your place in the driver's seat and steer towards a future where every drive is an extraordinary experience.





TECHNOLOGY



CRITICAL DELIVERY

Customise how you receive crucial information with the CUPRA Leon digital cockpit.

Select your preferred display of key information from several single, dual or no-dial layouts spread across the 10.25" screen, then choose the information to show in the left and right widgets.



LET'S GO PARKING

Park like a pro every time with the CUPRA Leon park-assist self-parking system¹¹.

12 sensors spread strategically around the vehicle help you identify a suitable parking spot, then let the system take control of the steering to guide you smoothly into place, aided by a reversing camera with dynamic guidelines.





MULTIMEDIA



LATEST GENERATION INFOTAINMENT

The CUPRA Leon features our latest generation entertainment system, spread across a larger 12.9" touchscreen with separate illuminated controls for temperature and volume.

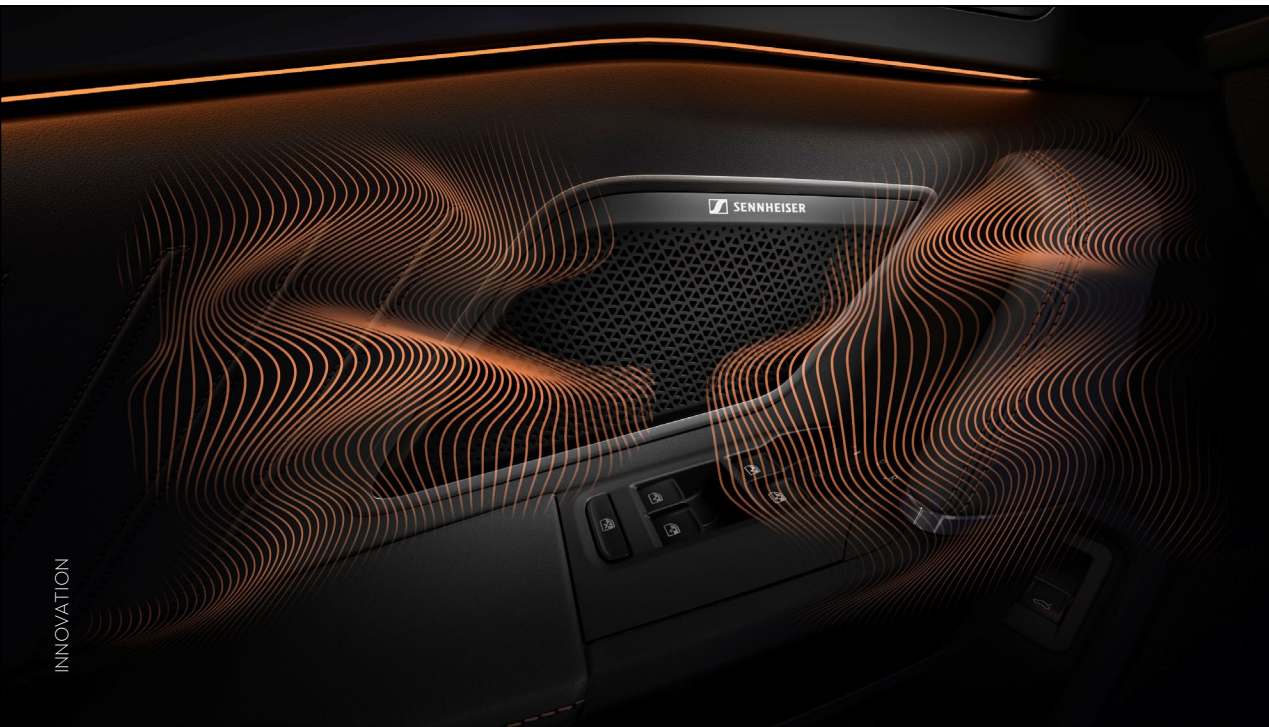
The crisp, high-definition screen is your portal to functions like navigation, 3-zone climate control, drive profiles, ambient lighting and vehicle settings, and compliments the 10.25" customisable digital cockpit instrumentation.



SENNHEISER PREMIUM AUDIO

Each CUPRA Leon comes equipped with a 6-speaker sound system including selectable sound stages and adjustable equaliser.

Leon VZx (and optional on Leon S & Ve) steps up to announce our partnership with renowned audio experts Sennheiser, equipping an additional 6 speakers (including a boot-mounted subwoofer), 390-watt amplifier and Sennheiser-crafted immersion software to faithfully re-create your favourite soundscape and transform Leon's interior into anything from a pumping club to an exquisite concert hall.





SAFETY



FULL SUITE

CUPRA is fully committed to your wellbeing, that's why the suite of safety and driver-assist systems¹¹ in the CUPRA Leon is as long as your arm, plus someone else's arm too.

A small sample of these include front assist collision warning and braking, speed sign recognition, lane safety, blind spot monitoring and ten airbags*.¹¹



INCREDIBLY CRUISE

The CUPRA Leon features an advanced cruise control system which can follow the car in front while making minor speed corrections¹¹, plus engage travel assist to aid you in holding to the centre of the lane¹¹.



SUPPORT

Our services are crafted for your peace of mind.

Overseas Sportstourer model shown



COMPREHENSIVE ASSURANCE



5-YEAR WARRANTY

We have every confidence in our CUPRA vehicles, and we want to share that confidence with you. That's why every CUPRA comes with a factory-backed 5-year unlimited kilometre warranty*.



5-YEAR ROADSIDE ASSISTANCE

Every new CUPRA vehicle comes with five years of CUPRA Roadside Assistance including 24-hour roadside support, emergency accommodation, car rental and towing*. We'll help you get back on the road again – at any time of day.

Overseas models shown.

*[Warranty](#) and [Roadside](#) conditions and exclusions apply. Your rights under this warranty are provided in addition to, and in some cases overlap with, consumer guarantees under Australian Consumer Law and do not limit or replace them. See website for full details.



MODELS

Your guide to the available engines, key equipment and colours.

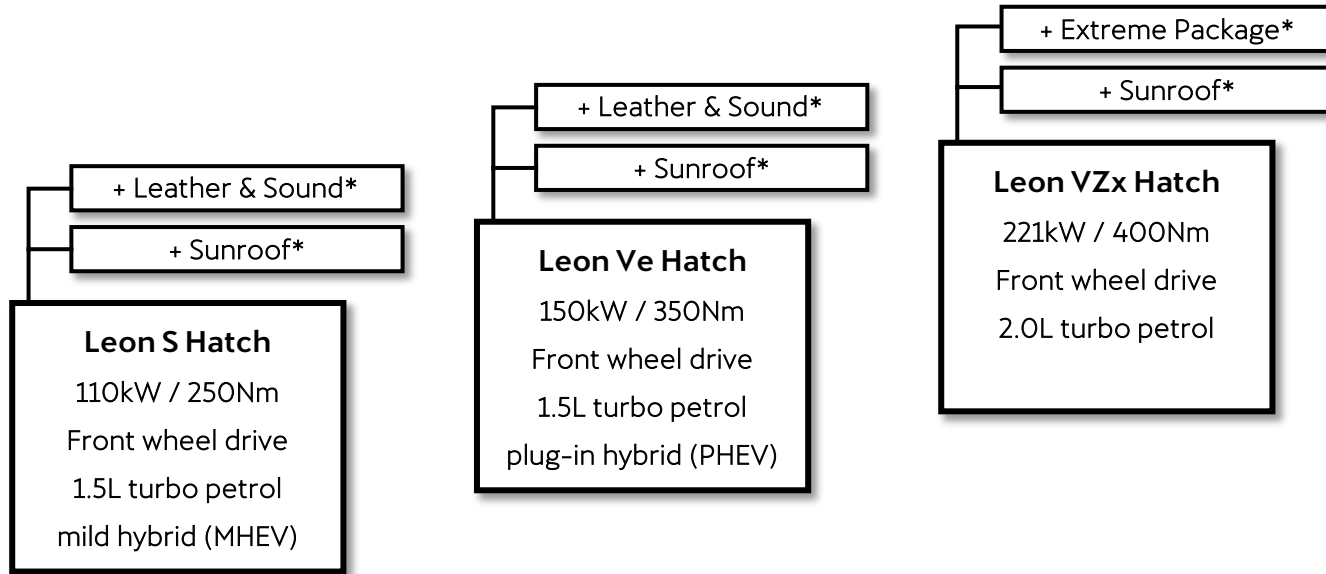


Overseas VZx Hatch model shown with optional Extreme Package



VARIANTS

We start where others finish, including bespoke drivetrains and a curated selection of options for your consideration.

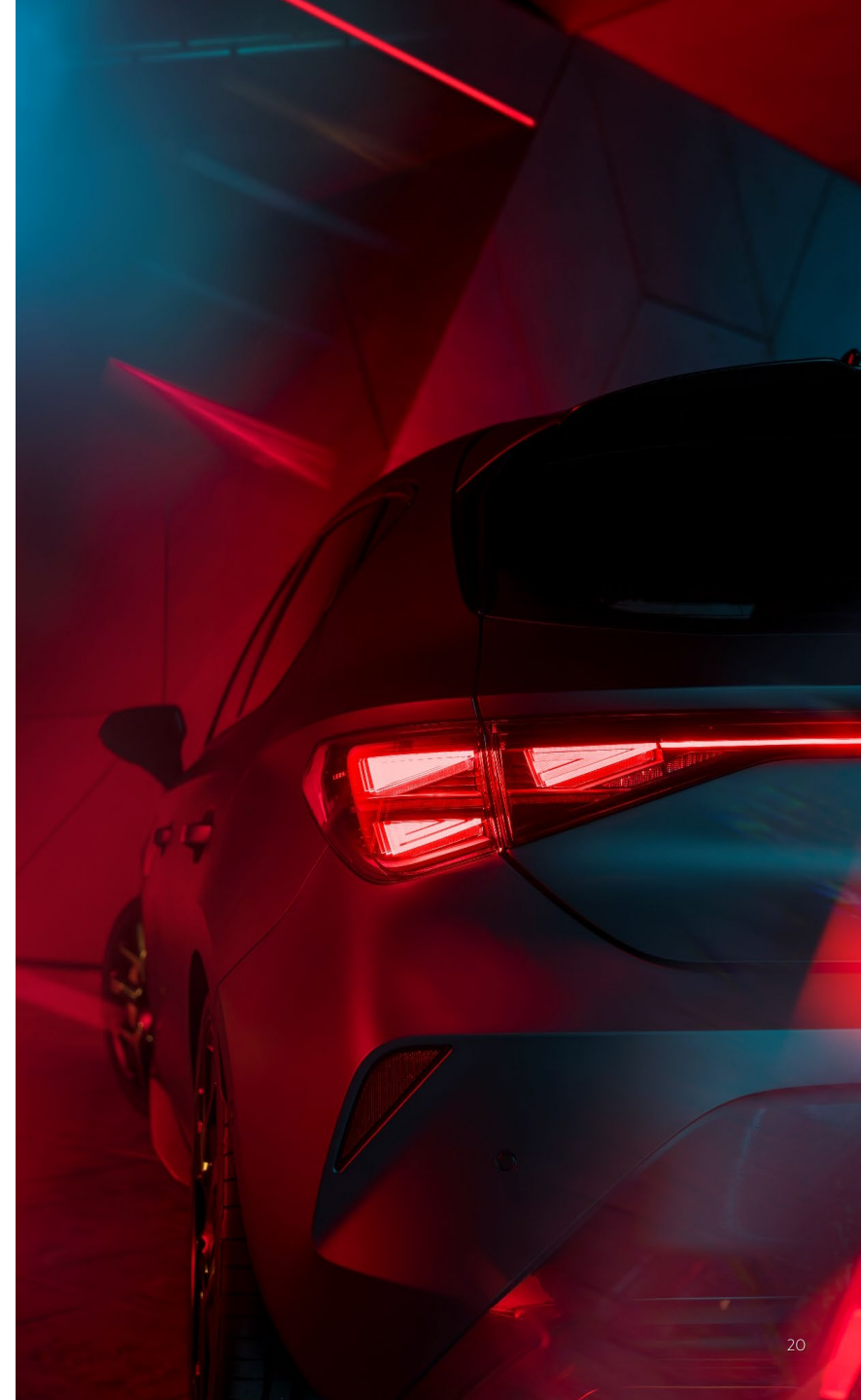


KEY FEATURES & ALLOY WHEELS

EXTERIOR COLOURS

UPHOLSTERIES

*Optional features available at additional cost





LEON S HATCH



KEY STANDARD FEATURES

- 1.5L turbo petrol engine with 48V mild hybrid (MHEV) drivetrain
- 110kW / 250Nm / 8.7sec 0-100km³ / 5.4L/100km⁵
- 7-speed DSG with paddle shift
- 18" 'Windstorm' black & silver alloys (pictured)
- LED headlights with diamond DRL's
- LED 'coast-to-coast' taillights including CUPRA logo
- Smart entry & push-button start
- Drive profile selection
- Sports bucket front seats with heating
- Soul Black Dinamica seat trim with blue perforation
- Drivers' power seat with memory
- Supersport heated steering wheel
- 6-speaker sound system
- 3-zone climate control
- 10.25" digital cockpit instrumentation
- 12.9" touchscreen infotainment with navigation
- Apple CarPlay® & Android Auto™ (wireless) with wireless phone charger
- Ambient interior lighting
- Auto-dimming interior mirror
- Driver assist suite including active cruise & travel assist¹¹
- Speed sign recognition¹¹
- Rear camera with dynamic guidelines
- Front & rear parking sensors & park assist self-parking
- 10 airbags including rear side & front centre

OPTIONS

- Optional wide panoramic sunroof
- Optional Leather & Sound Package – Moonplate leather appointed seat trim⁷, front passenger power seat with memory & 12-speaker Sennheiser premium sound system





LEON Ve HATCH



KEY STANDARD FEATURES

1.5L turbo petrol engine
CUPRA Gen2 plug-in hybrid (PHEV) drivetrain
150kW / 350Nm / 7.7sec 0-100kmh³ / 1.4L/100km⁵
123km electric vehicle range⁶
6-speed DSG automatic transmission with paddle shift
11kW AC charging / 50kW DC fast charging
Electric & Hybrid drive profiles
Mode 2 & 3 charging cables

In addition to Leon S Hatch

18" 'Garbi' black & copper alloys (pictured)
Multi-link independent rear suspension

OPTIONS

Optional wide panoramic sunroof
Optional Leather & Sound Package – Moonstone leather appointed seat trim⁷,
front passenger power seat with memory & 12-speaker Sennheiser premium
sound system

IMPORTANT NOTE REGARDING PRE-LAUNCH INFORMATION

The information regarding the New Leon Ve is made available during its pre-launch phase, prior to arrival of Australian vehicles. As such, the content of this brochure is subject to change / final confirmation. Please re-confirm any areas of importance with your CUPRA Agent.



LEON VZx HATCH



KEY STANDARD FEATURES

2.0L turbo petrol engine
221kW / 400Nm / 5.7sec 0-100km^h / 7.6L/100km^l

In addition to Leon Ve Hatch

19" 'Hailstorm' black & copper alloys (pictured)
DCC adaptive suspension
Electro-hydraulic front differential locking
Moonslate leather appointed seat trim⁷
Front passenger power seat with memory
12-speaker Sennheiser premium sound system
Customisable engine sound modelling
Upgraded brake package including cross-drilled front rotors
CUPRA drive profile
Quad exhaust
Side skirts

OPTIONS

Optional wide panoramic sunroof
Optional Extreme Package - Matrix cascading high beams, Enceladus Grey
Seaqual & Dinamica appointed seat trim, Sabelt CUP Bucket front seats with
carbon fibre back (less front centre airbag & front seat-back pockets), copper
6-piston Akebono front calipers & larger front rotors, rear spoiler extension,
dark gloss grey interior accents (in place of copper)





COLOURS

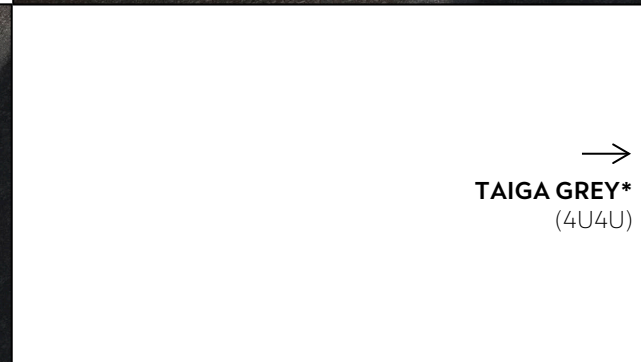
Continued next page.



←
MAGNETIC TECH
(S7S7)



→
GLACIAL WHITE
(2Y2Y)



→
TAIGA GREY*
(4U4U)



←
FIORD BLUE
(9K9K)



←
MIDNIGHT BLACK
(OEOE)

The reproduction process does not allow for exact reproduction of the exterior or the upholstery colours. Please contact your CUPRA Agent for further information on colours and upholstery combinations.

*Optional Premium Paint available at additional cost

**Optional Matte Paint available on VZx only at additional cost



COLOURS

Continued previous page.

→
GRAPHENE GREY*
(R6R6)



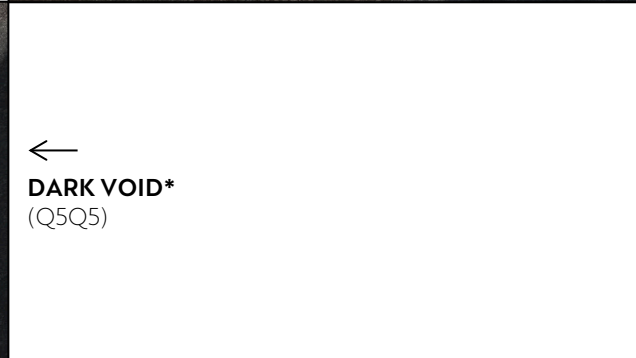
→
MAGNETIC TECH MATTE**
(9R9R) (VZx only)



←
CENTURY BRONZE MATTE**
(L3L3) (VZx only)



←
DARK VOID*
(Q5Q5)



←
ENCELADUS GREY MATTE**
(Q7Q7) (VZx only)



The reproduction process does not allow for exact reproduction of the exterior or the upholstery colours. Please contact your CUPRA Agent for further information on colours and upholstery combinations.

*Optional Premium Paint available at additional cost

**Optional Matte Paint available on VZx only at additional cost



UPHOLSTERIES



LEON VZx Hatch with optional Extreme Package:
Enceladus Grey Seaqual & Dinamica appointed with sustainable content (CUP Bucket)



LEON S & Ve Hatch with optional Leather & Sound Package, & VZx Hatch:
Moonslate dark grey leather appointed⁷



LEON S & Ve Hatch:
Soul Black Dinamica with blue perforation & sustainable content



[BOOK A TEST DRIVE](#)

[EXPLORE LEON](#)

[SEARCH AVAILABLE STOCK](#)

[LOCATE A CUPRA GARAGE](#)

The reproduction process does not allow for exact reproduction of the exterior or the upholstery colours. Please contact your CUPRA Agent for further information on colours and upholstery combinations. Overseas models shown.



TECHNICAL

In the realm of CUPRA Leon, technical prowess is more than mere numbers; it's a symphony of engineering achievements.

Here, every detail sings of dedication to excellence, marrying power with sustainability, efficiency with passion, track with road. This is where state-of-the-art technology converges, creating a driving experience that connects human and machine.





TECHNICAL

	S	Ve	VZx
Engine			
Engine type	4-cylinder inline petrol engine; turbocharged; intercooled		
Engine size (L)	1.5	1.5	2.0
Max. engine power (kW)	110	110	221
Max. engine torque (Nm)	250	250	400
Fuel type (recommended)	Premium unleaded 95 RON minimum	Premium unleaded 95 RON minimum	Premium unleaded 98 RON minimum
Hybrid electric vehicle system			
Hybrid technology	48V mild hybrid (MHEV)	Plug-in hybrid (PHEV)	-
Max. motor power (kW)	-	85	-
Max. motor torque (Nm)	-	330	-
Hybrid battery	0.7kWh Li-on	20kWh Li-on	-
Charging - AC	-	Type 2, 11kW	-
Charging - DC	-	Type 2 CCS, 50kW	-
Included charging cables	-	Mode 2 & 3	-
Total system output			
Max. power (kW)	-	150	-
Max. torque (Nm)	-	350	-
Drivetrain			
Driven wheels	Front		
Transmission	Dual-clutch Direct Shift Gearbox (DSG)		
Forward gears	7	6	7

	S	Ve	VZx
Transmission control	Shift By Wire (SBW) with paddle shift & sport mode shortcut		
Differential control	Extended electronic differential locking	Extended electronic differential locking	Electro-hydraulic differential locking
Weights & capacities			
Tare mass (kg)	1,446	1,673	1,540
Gross Vehicle Mass (kg)	1,910	2,130	2,000
Fuel tank capacity (L)	45	40	50
Running Gear			
Steering	Rack-mounted electric power-assisted progressive steering		
Suspension	Sport design	Sport design	Dynamic Chassis Control (DCC) adaptive suspension
Suspension - Front	Independent MacPherson struct		
Suspension - Rear	Semi-rigid axle (torsion beam)	Independent multi-link	Independent multi-link
Brakes - Front	288x25mm ventilated discs	340x30mm ventilated discs	357x34mm ventilated cross-drilled discs
	Single piston calipers with metallic finish	Single piston calipers	Dual piston calipers with black finish & CUPRA word mark
Brakes - Rear	272x10mm solid discs	310x22mm ventilated discs	310x22mm ventilated discs
	Single piston calipers with metallic finish	Single piston calipers	Single piston calipers with black finish
Optional Performance Brakes - Front	-	-	375x36mm cross-drilled front discs
	-	-	6-piston Akebono calipers with copper finish & CUPRA word mark



	S	Ve	VZx
Performance³			
0 – 80km/h (seconds)	6.1	5.5	4.5
0 – 100km/h (seconds)	8.7	7.7	5.7
Fuel / Energy consumption^{5/6}			
Combined (L/100km)	5.4	1.4	7.6
Combined CO2 emission (g/km)	123	33	172
Energy consumption (Wh/km)	-	181	-
Electric range (km) (WLTP)	-	123	-
Dimensions			
Length (mm)	4,398	4,399	4,398
Width (mm)		1,799	
Height (mm)	1,444	1,441	1,444
Wheelbase (mm)	2,686	2,682	2,683
Turning circle (m)		10.8	
Luggage area – Seats up (L)	344 (888 with rear seats down)	270 (810 with rear seats down)	344 (888 with rear seats down)

[BOOK A TEST DRIVE](#)

[EXPLORE LEON](#)

[SEARCH AVAILABLE STOCK](#)

[LOCATE A CUPRA GARAGE](#)





FULL FEATURES

	S	Ve	VZx
Wheels			
18" black & silver 'Windstorm' alloy wheels	S	-	-
18" black & copper 'Garbi' alloy wheels	-	S	-
19" black & copper 'Hailstorm' alloy wheels	-	-	S
Space saver spare	S	-	S*
Tyre repair kit	-	S	S**
Driver engagement			
Dynamic Chassis Control (DCC) adaptive suspension	-	-	S
Drive profile selection - Comfort, Performance & Individual drive modes		S	
Drive profile selection - Additional CUPRA drive mode	-	-	S
Drive profile selection - Additional electric & hybrid drive modes	-	S	-
Engine sound-modelling - Comfort, Performance, Pure & CUPRA	-	-	S
Leather appointed multifunction steering wheel [7]		S	
Heated supersport steering wheel with drive profile & engine-start satellite buttons		S	
Progressive steering		S	
Exterior			
Side skirts - Gloss black	-	-	S
Rear roof spoiler - Body coloured		S	
Rear roof spoiler extension - Gloss black	-	-	P

	S	Ve	VZx
Sports bumper design with integrated rear diffuser		S	
Rear bumper with gloss-grey inserts	S	-	-
Rear bumper with copper inserts	-	S	-
Quad exhaust	-	-	S
Lighting			
Full LED headlights with auto-levelling & triangle-eye daytime running lights		S	
Light assist - Automatic high beam		S	
Matrix Ultra cascading high beam control	-	-	P
Coast-to-coast rear LED lights with illuminated CUPRA logo & Leon word mark		S	
Front & rear welcome-lighting sequence including approach lighting		S	
Front fog lights with cornering function		S	
CUPRA logo puddle lights in exterior mirrors		S	
Touch-sensitive reading lights front & rear		S	
Ambient interior lighting (dash & front doors) with several colour schemes		S	
Illuminated front scuff plates		S	
Mirrors			
Power exterior mirrors with auto-folding, heating and memory		S	
Auto-dimming interior rear-view mirror		S	
Audio & media			
6 speaker CUPRA sound system	S	S	-
Sennheiser premium surround sound system with 12 speakers (including subwoofer) & 390W amplifier	P	P	S
Pre-set sound-stages & equaliser		S	
Digital radio (DAB+)		S	

* Available late 2025 production onwards **Fitted to early 2025 production vehicles without a spare wheel

Key: S = Standard | P = Package content | - = Not available



	S	Ve	VZx
Interior & seating			
Sunroof - Wide panoramic with electric front tilt & slide & manual sunblind	P	P	P
One-touch power windows with remote open / close		S	
Manual tilt & telescopic steering wheel adjustment		S	
Alloy pedals		S	
Sports bucket front seats with integrated headrests & embossed CUPRA logo		S	
Sabelt CUP Bucket front seats with carbon fibre back (less seat-back pockets)	-	-	P
Dinamica cloth seat trim in Soul Black with blue perforation & sustainable content	S	S	-
Leather appointed seat trim in Moonstone dark grey [7]	P	P	S
Seaqual & Dinamica appointed seat trim in Enceladus Grey with sustainable content	-	-	P
Driver's seat with 12-way power adjustment & memory positions x3		S	
Front passengers seat with 8-way manual adjustment	S	S	-
Front passengers seat with 12-way power adjustment & memory positions x3	P	P	S
Accents in copper - Air vents, steering wheel & lower centre console		S	
Accents in gloss grey - Air vents, steering wheel & lower centre console	-	-	P
Floor mats		S	

	S	Ve	VZx
Comfort			
3-zone climate control air-conditioning		S	
Rear-seat climate adjustment with digital readout		S	
Smart climate control functions		S	
AirCare Clima dust & pollen filtering		S	
Heated steering wheel		S	
Heated front seats		S	
Rear centre armrest with integrated cupholders		S	
Technology			
12.9" touchscreen infotainment system		S	
Satellite navigation		S	
10.25" digital cockpit with variable displays		S	
USB-C ports x4		S	
12V accessory socket x1 (front)		S	
Smart entry & push-button start		S	
Proximity locking (approach unlock / depart lock)		S	
Apple CarPlay® & Android Auto™ - Wireless [9]		S	
Bluetooth® phone connectivity including audio & message access [10]		S	
Dual phone support [8]		S	
Wireless phone charger [8]		S	
Voice control for various functions (virtual assistant) including hold for Siri		S	
Storage & convenience			
Cupholder x4 & bottle holder x4		S	
60:40 split-fold seats with ski hatch		S	
Dual level boot storage	S	-	S
Shopping bag hooks x2 boot		S	



	S	Ve	VZx
Driver-assist systems¹¹			
Adaptive cruise control with 'follow to stop'		S	
Travel assist - Lane centring		S	
Front assist - Collision warning & autonomous emergency braking		S	
Front assist with pedestrian & cyclist detection		S	
Front assist with front cross traffic assist & swerve support		S	
Speed sign recognition & display with speed limit assist		S	
Lane assist - Lane departure alert with corrective steering assistance		S	
Side assist - Blind spot monitoring		S	
Exit assist - Rear crossing traffic alert		S	
Exit warning - Approaching vehicle warning when exiting		S	
Rear camera with dynamic parking guidelines & sonar display		S	
Park distance control - Front & rear parking sonar		S	
Park assist - Self-parking system		S	
Rain sensing wipers		S	
Driver alert - Drowsiness / Attention monitor		S	
Tyre pressure warning system		S	
Electronic park brake with auto hold		S	
Safety			
10 airbags - Front, front side, rear side, driver's knee, front centre, curtain (front centre not available with Extreme Package)		S	
Rear seat belt monitor		S	
Child seat anchors - x3 top tether points & ISOFIX for outer rear seats		S	
Anti-theft alarm system including interior motion sensor & siren		S	

PACKAGES

	S	Ve	VZx
Sunroof			
Sunroof - Electric wide panoramic with front tilt & slide & manual sunblind	P	P	P
Leather & Sound			
Leather appointed seat trim in Moonstone dark grey [7]	P	P	S
Front passengers seat with 12-way power adjustment & memory positions x3	P	P	S
Sennheiser premium surround sound system with 12 speakers (including subwoofer) & 390W amplifier	P	P	S
Extreme Package			
6-piston Akebono calipers with copper finish, CUPRA word mark and larger cross-drilled front discs	-	-	P
Sabelt CUP Bucket front seats with carbon fibre back	-	-	P
Seaqual & Dinamica appointed seat trim in Enceladus Grey with sustainable content	-	-	P
Matrix Ultra cascading high beam control	-	-	P
Accents in gloss grey - Air vents, steering wheel & lower centre console	-	-	P
Rear roof spoiler extension - Gloss black	-	-	P
Less map pockets - Back of front seat	-	-	P
Less front seat centre airbag	-	-	P

IMPORTANT NOTE REGARDING PRE-LAUNCH INFORMATION

The information regarding the New Leon Ve is made available during its pre-launch phase, prior to arrival of Australian vehicles. As such, the content of this brochure is subject to change / final confirmation. Please re-confirm any areas of importance with your CUPRA Agent.



NOTES

[3] The figures stated are for the purposes of comparison amongst vehicles tested under the same testing procedures only. The actual figure may vary depending on multiple factors such as fuel quality, vehicle load, environmental and road conditions.

[5] Fuel consumption figures according to Australia Design Rule (ADR) 81/02 derived from laboratory testing. Factors including but not limited to driving style, road and traffic conditions, environmental influences, vehicle condition, and accessories fitted, will in practice in the real-world lead to figures, which generally differ, from those advertised. Advertised figures are meant for comparison amongst vehicles only.

[6] Range and energy consumption figures approved to ADR 81/02 derived from WLTP testing. Factors including but not limited to driving style, road and traffic conditions, environmental influences, vehicle condition and accessories fitted, will in practice in the real-world lead to figures which generally differ from those advertised. Advertised figures are meant for comparison amongst vehicles only.

[7] Leather appointed seats have a combination of genuine and artificial leather, but are not wholly leather.

[8] Compatibility will vary by device.

[9] App-Connect featuring wireless Apple CarPlay® and wireless Android Auto™ is compatible with the latest versions of iOS and Android. Active data service required.

[10] The Bluetooth® word mark and logo is a registered trademark owned by Bluetooth SIG, Inc. Any use of such marks is under licence. Not all devices will be compatible and functionality will vary depending on the device.

[11] Safety / Driver assist technologies are designed to assist the driver but should not be used as a substitute for safe driving practices.

CUPRA is committed to a policy of continuous product development and reserves the right to make changes to specifications, colours and prices without notice. The information in this brochure can therefore be given as guidance only. While CUPRA makes every effort to ensure that specifications are accurate at the time of publication, you should always check with your authorised CUPRA Partner for the latest information. Due to limitations of the reproduction process the colours displayed in this brochure may vary slightly from the actual paint and material colour.

Volkswagen Group Australia Pty Ltd trading as CUPRA Australia: LMCT0012305(VIC), MD17907(NSW), 6161(TAS), MD29505(WA), 20000574(ACT).

The world is a better place with you in it;

[BOOK A TEST DRIVE](#)

[EXPLORE LEON](#)

[SEARCH AVAILABLE STOCK](#)

[LOCATE A CUPRA GARAGE](#)



CUPRA



VAMOS!

[BOOK A TEST DRIVE](#)

[EXPLORE LEON](#)

[SEARCH AVAILABLE STOCK](#)

[LOCATE A CUPRA GARAGE](#)